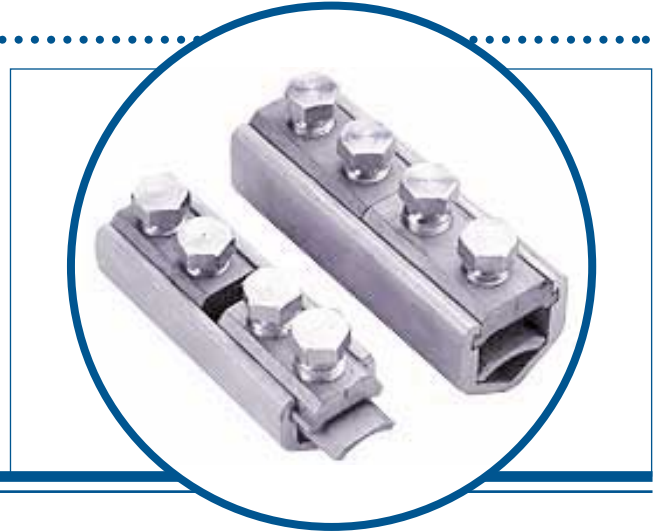


Mechanical Connectors

Straight Through and Parallel Branch

Straight Through and Parallel Branch Mechanical Connectors



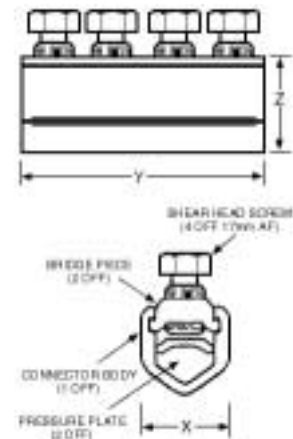
Straight Through

Design Features:

- Quick, clean and simple installation procedures that do not require any craft skill.
- No heat and the absence of aggressive fluxes, mean safer working methods.
- Precise control of critical contact features is built in, giving a connection with long-term reliability - every time!
- High conductivity, stable under 130°C overload and 250°C short circuit conditions, gives complete compatibility with today's high temperature cross-linked polymer insulated cables.

Installation requires just a spanner (17mm AF). A simple hook tool is available to hold the connector firmly during bolt shearing which makes the job even easier.

All connectors are type tested to draft IEC Document No. 91/28490 and the extended load cycling test regime of BS4579.



Conductor Size (mm)	X	Y	Z
Up to 185	37.5	100	35
240 and 300	45	120	43.5

General Note

WT Henley reserves the right to make changes in product specification without notice or liability. All information is subject to WT Henley's own data and is considered accurate at time of going to print.

© WT Henley Limited · Crete Hall Road, Gravesend, Kent, DA11 9DA, England
Telephone: +44(0)1474 564466 · Facsimile: +44(0)1474 566703 · Email: homesales@wt-henley.com · Website: www.wt-henley.com



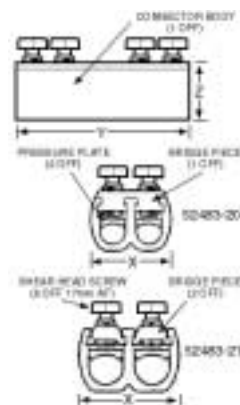
A subsidiary of
TT electronics plc

Issue 1 · 07.01

Paralled Branch

Benefits:

- Manufactured from extruded 6082 T6 aluminium alloy, internally splined and grit blasted to disrupt the aluminium conductor's surface oxide layer.
- Removable bridge pieces allow easy insertion of the conductors from the top - no need to spring the cable cores.
- Open-topped extrusion eliminates the mechanical weakness that can affect the bridged die extrusion of tubular designs.
- Shear bolts pre-lubricated with low friction coating to reduce thread drag, hence clamping torque is better controlled.
- Cost effective.

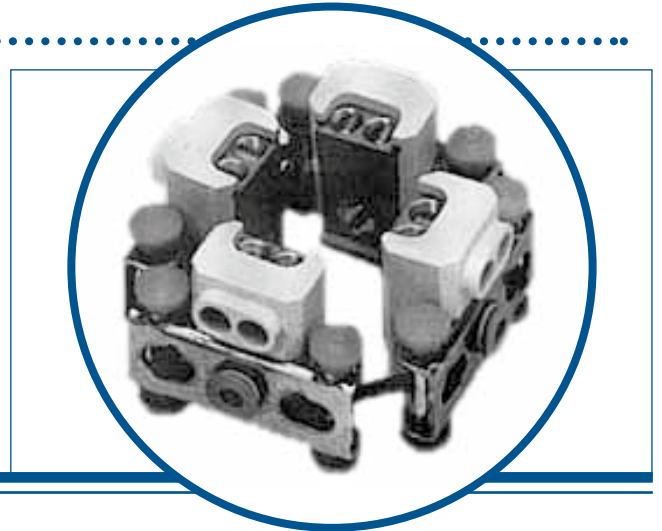


Conductor Size (mm)	X	Y	Z
95-185 Stranded Aluminium 95-150 Stranded Copper	60	130	40
185-300 Stranded Aluminium 185-240 Stranded Copper	75	140	44

Mechanical Connectors

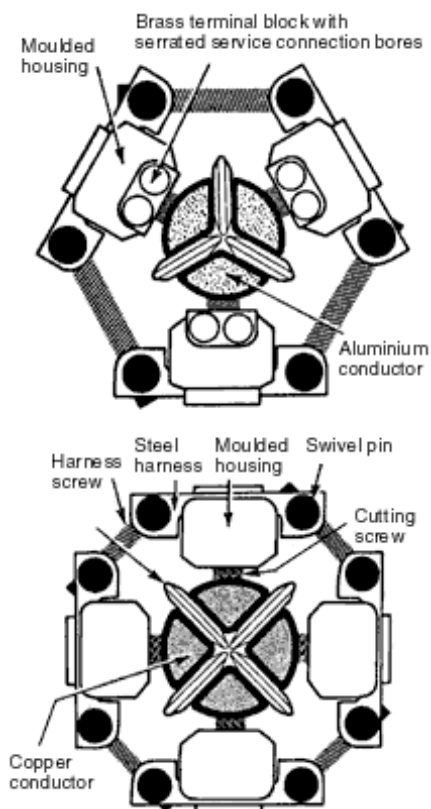
Safe-T Multi Service Connector

The Safe-T connector is a safe, quick and most reliable method for the live jointing of new service connections to existing three-phase mains supply cables.



Design Features:

- Very safe since no insulation is removed from the live main cable until the service connections are completed.
- Simple installation - no special training and few tools required.
- Reliability is designed into the electrical connections by using torque controlled socket headed screws.
- Versatility - suitable for use with 3 & 4 core cables and copper or solid aluminium conductors.
- Economy results from the ability to tap-off up to six single phase or two three-phase services from one joint.
- Suitable for use with paper or polymeric cables.



General Note

WT Henley reserves the right to make changes in product specification without notice or liability. All information is subject to WT Henley's own data and is considered accurate at time of going to print.

© WT Henley Limited · Crete Hall Road, Gravesend, Kent, DA11 9DA, England
Telephone: +44(0)1474 564466 · Facsimile: +44(0)1474 566703 · Email: homesales@wt-henley.com · Website: www.wt-henley.com



A subsidiary of
TT electronics plc