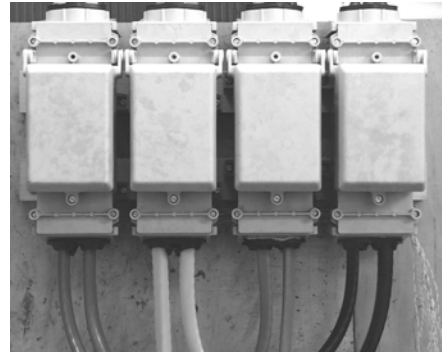


Four Pole Insulated Heavy Duty Cut-out

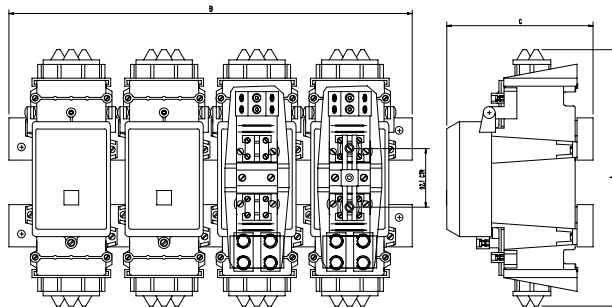
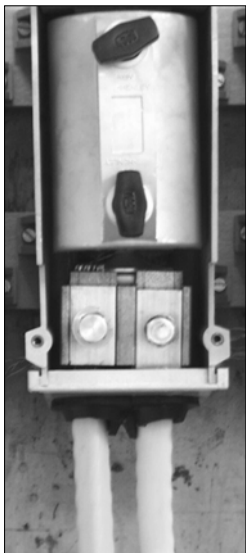
Rated from 500A to 630A inclusive

- New incoming termination arrangement
- Suitable for use with stranded/ solid copper or aluminium conductors
- For use with 95 – 300mm² Cables
- Designed and tested in accordance with ESI 37-2 Distribution Equipment Specification



GENERAL FEATURES

- Again as per its sister product, this fully insulated four-pole cut-out is designed to accept BS 88 'J' type fuse-links. Separate enclosures are provided for phase and neutral/ earth constituents, offering complete segregation thus generating a high level of operator protection and allows for easy cabling.
- Moulded from high impact glass reinforced Polyester material, which is inherently flame retardant *UL94 V0* rated, and poses an electrical tracking resistance (*CTI*) >600.
- Standard shrouded through grip wedge type Carriers (*92mm fixing Centres*) are provided for phase connection/ isolation, including a screwdriver-operated solid-copper link for neutral.
- Cable entry and exit from cut-out through rigid PVC grommets, keeping unit size to an absolute minimum, making the product ideal for installation where space is limited.
- Incoming cable termination via aluminium mechanical connector (*Double Shear bolt*) type. The connector will terminate 2x (95 – 300mm²) stranded/ solid conductors.
- Outgoing cable connection provided via tunnel terminals manufactured from solid brass extrusion, with 2 hex-drive pinch screws fitted within each conductor entry. Outgoing connection provided with standard terminal arrangement (*2x 120mm² and 1x 240mm²*) conductors.
- Both an individual security sealing and pad-lockable unit isolation facility are provided via four-pole enclosure lid mechanism.
- The insulated cut-out is supplied affixed to wooden battens, pre-drilled ready for wall mounting.



PRODUCT NUMBER	DESCRIPTION	APPROXIMATE DIMENSIONS			
		A (mm)	B (mm)	C (mm)	WEIGHT (Kg)
54428-01	500A TP&N	400	630	228	24.0
54428-04	630A TP&N	400	630	228	24.0
Available on Request	500/ 630A SP	400	150	228	6.25