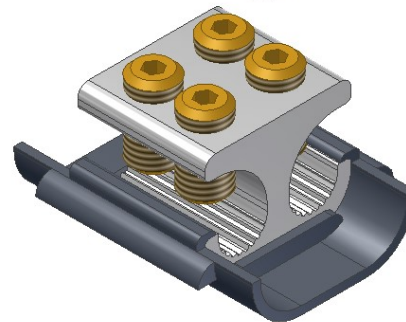
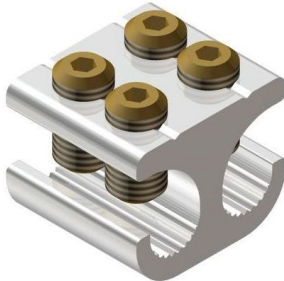


MB21/1A & MB21/1A/SHR Connector

MB21/1A/SHR

MB21/1A



Principle Application:

Stranded and solid circular conductors.

Range:

Product Reference (Part Number)	Type	Core C.S.A. (mm ²)	
		Min	Max
MB21/1A & MB21/1A/SHR (51811-84) (51801-31)	Branch	4*	35

Note: For jointing other core configurations/sizes please contact Sicame Engineering Dept

The **Sicame MB21/1A** mechanical connector is designed for service branch connections on stranded or solid cable. The aluminium connector yoke is electro-tinned as standard and is supplied with brass grub screws making it suitable for jointing both copper and aluminium conductor cores.

The **Sicame MB21/1A/SHR** mechanical connector has a factory fitted lower polypropylene shroud with a 'snap on' upper to fully insulate the assembled connector.

Secondary Application:

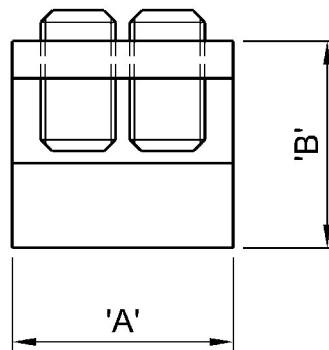
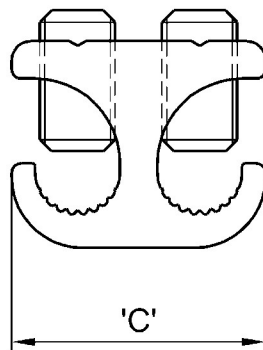
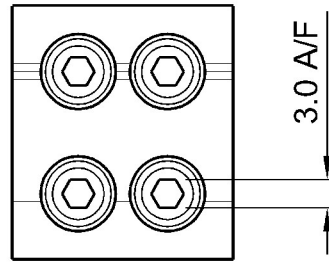
Stranded and solid shaped service conductors.

Product Reference (Part Number)	Type	Core C.S.A. (mm ²)	
		Min	Max
MB21/1A & MB21/1A/SHR (51811-84) (51801-31)	Branch	4*	35

Note: For jointing other core configurations/sizes please contact Sicame Engineering Dept

**MB21/1A & MB21/1A/SHR
Connector**

Physical Dimensions:



Connector Reference (Part Number)	Dimensions (mm)		
	'A'	'B'	'C'
MB21/1A & MB21/1A/SHR (51811-84) (51801-31)	23.5	22.0	27.0

Material:

Body: Aluminium Alloy (Tinned) (MB21/1A & MB21/1A/SHR)

Screws: Brass

Shroud: Polypropylene

Test Specification:

BS EN 61238-1 : 2003 Compression and Mechanical Connectors for power cables for rated voltages up to 36 kV. Test Methods and Requirements.

Fitting Instructions:

1. Cut the cables to length and strip the core insulation equal to the length of the connector +3mm.
2. Thoroughly abrade all conductors to be jointed.
3. Align cores within connector and tighten screws on each side of the connector consecutively, until tight.