

Underground Distribution

## Fuse Service Equipment

# Multiway Service Heads

Ideally suited for multi-occupancy properties.  
7,10,16 and 24 way units available.

Our range of Multiway Service Heads provide a safe and reliable means of supply/isolation for subdivided properties such as blocks of flats or large house conversions.

Robust service-fuse protection is essential maintaining secure supplies of Electricity to consumers.

Based around our market leading Series 7 House Service Cutouts, our range of Multiway Service Heads are available in a choice of 7, 10, 16 or 24 way variants.

Suiting SNE or CNE cables\*, service fuses are mounted in one horizontal bank for safe and easy cabling. Additional security is provided by a PVC shroud over live metal, ensuring safety during sub-circuit wiring.

Connections to the Cutouts themselves are by means of socket headed screws and the necessary hexagon headed wrench can be supplied upon request.



Recommended maximum cable sizes:

7 and 10 way is 120mm<sup>2</sup>

16 way is 185mm<sup>2</sup>

24 way is 300mm<sup>2</sup>

If larger cables are to be accommodated, we will be pleased to advise.

Looped mains incoming cables can be accommodated using an extra entry bush.

- Protection to BS 5420, IP3X
- Manufactured from 1.6mm zinc coated steel.
- Fitted with own Series 7 Single Pole Cutouts to BS 7657:2010.
- Cutouts accept Fuselinks to BS HD 60269-3 2010 BS 88-3 2010.
- Option for mechanical type connections on incoming cable.

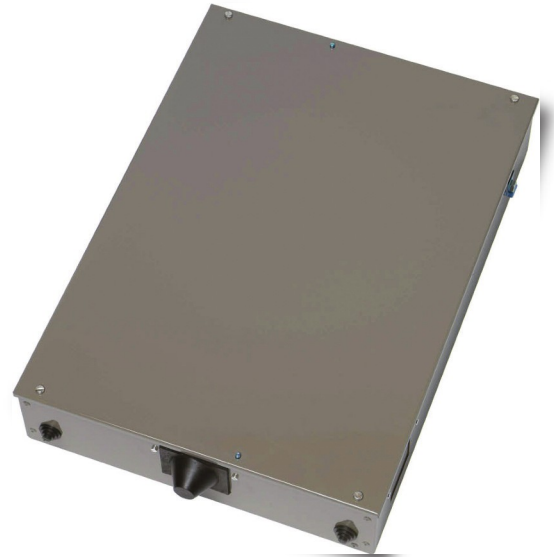
\* Please see note over

WT Henley Unit 4A, London Medway Commercial Park, James Swallow Way, Hoo, Rochester ME3 9GX ENGLAND  
A Division of Sicame UK Limited

Telephone: +44 (0) 1322 444500 - Facsimile: +44 (0) 1322 444502 - Email: sales@wt-henley.com - Website: www.sicameuk.co.uk  
Registered office: Unit 4A, London Medway Commercial Park, James Swallow Way, Hoo, Rochester ME3 9GX United Kingdom -  
Registration No 3319466 VAT Registration No GB 683822508

## Product Selection Chart

Product Code	Rating (Amps)	No of ways
55221-37	60/80	7
55221-63	100	7
55222-30	60/80	10
55222-69	100	10
55223-20	60/80	16
55223-53	100	16
55224-02	60/80	24
55201-20	100	24



## Outgoing Cable Arrangements

Two sizes of bush are supplied fitted in the top entry plate.

Smaller bushes take polymeric single phase service cables up to 35mm<sup>2</sup>.

Larger bushes are features for three core polymeric cables up to 35mm<sup>2</sup>.

NOTE: Consumer load must not exceed the maximum rated capacity of the mains cable installed.

Approximate dimensions (mm) including bushes and grommets.

7 way unit 634(L) x 390 (W) x 135 (D)

10 way unit 684 (L) x 528 (W) x 135 (D)

16 way unit 684 (L) x 804 (W) x 135 (D)

24 way unit 711 (L) x 1125 (W) x 121 (D)



*Please note: Separate neutral/earth bars are fitted with a neutral/earth link for CNE systems. The link must be removed for SNE systems. Additional accessories may be required for the connection of armour on the metal sheaths of paper-insulated cables. Further information is available on request.*

*Two external bolts are mounted on an extension earth bar, to allow for multiple earthing points*

General Note: The equipment in this publication should be installed by a suitably qualified person. Sicame UK Limited reserves the right to make changes in product specification without notice or liability. All information is subject to Sicame UK's own data and is considered accurate at time this document was created.

© 2018 Sicame UK Limited. All rights reserved. No part of this document may be copied or reproduced in whole or in part without prior written approval of Sicame UK Limited.

14688 2014-02-01

