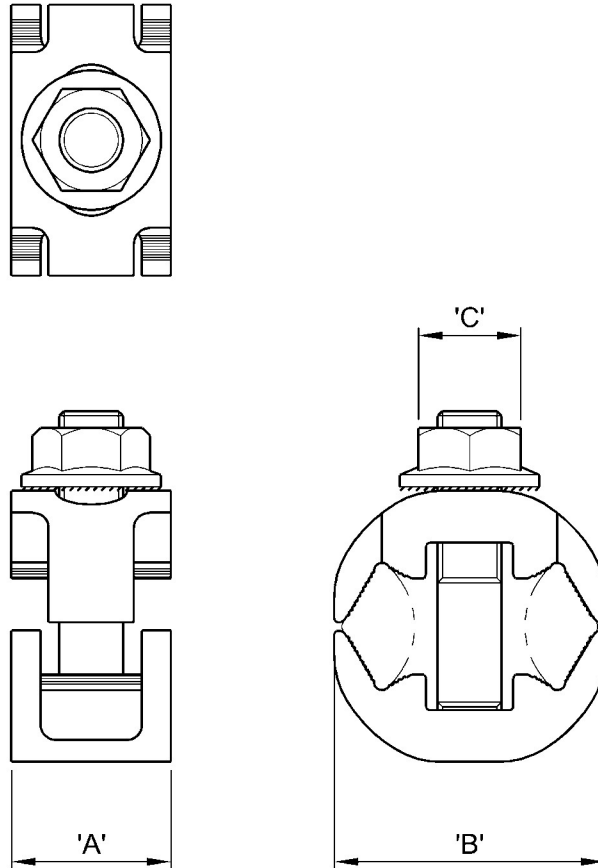


- Mains Service Connector
- Service / Service

MECHANICAL CONNECTORS

LVS Connector

Physical Dimensions



Connector Reference (Part Number)	Dimensions (mm)		
	'A'	'B'	'C'
LVS 1 (3395-418)	20	34	13 A/F
LVS 2 (51803-53)	20	44	13 A/F
LVS 3 (51803-51)	22	54	13 A/F

Material:

Aluminium Alloy (Electro-Tinned)

©COPYRIGHT

Sicame UK Ltd operates a continuous product design development and improvement programme and offers active co-operation establishing satisfactory procedures and systems to meet new or unusual jointing situations. The company reserves the right to introduce modifications to the above designs and specifications without prior notice.

sicame
UK