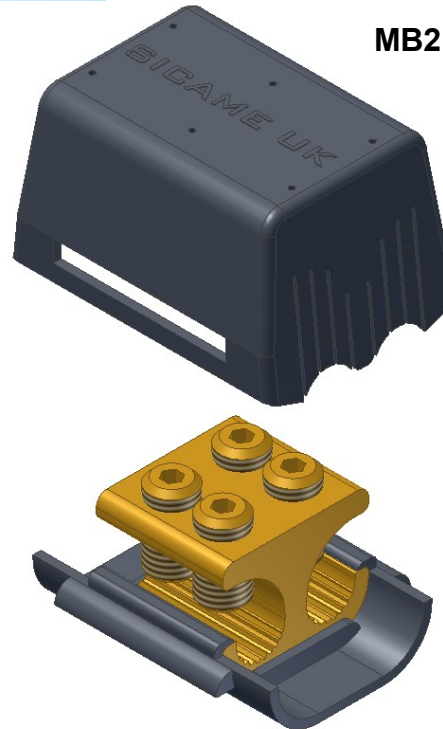
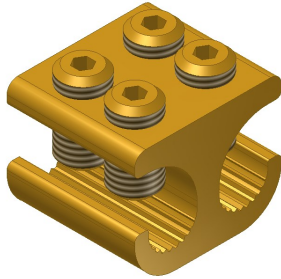


MB21/1 & MB21/1/SHR Connector

MB21/1/SHR

MB21/1



Principle Application:

Stranded and solid circular conductors.

Range:

Product Reference (Part Number)	Type	Core C.S.A. (mm ²)	
		Min	Max
MB21/1 & MB21/1/SHR (51809-01) (51809-26)	Branch	4*	35

Note: For jointing other core configurations/sizes please contact Sicame Engineering Dept
The **Sicame MB21/1** mechanical connector is designed for service branch connections on stranded or solid cable. The connector is manufactured in copper alloy for suitability of jointing both copper and aluminium conductor cores.

The **Sicame MB21/1/SHR** mechanical connector has a factory fitted lower polypropylene shroud with a 'snap on' upper to fully insulate the assembled connector.

Secondary Application:

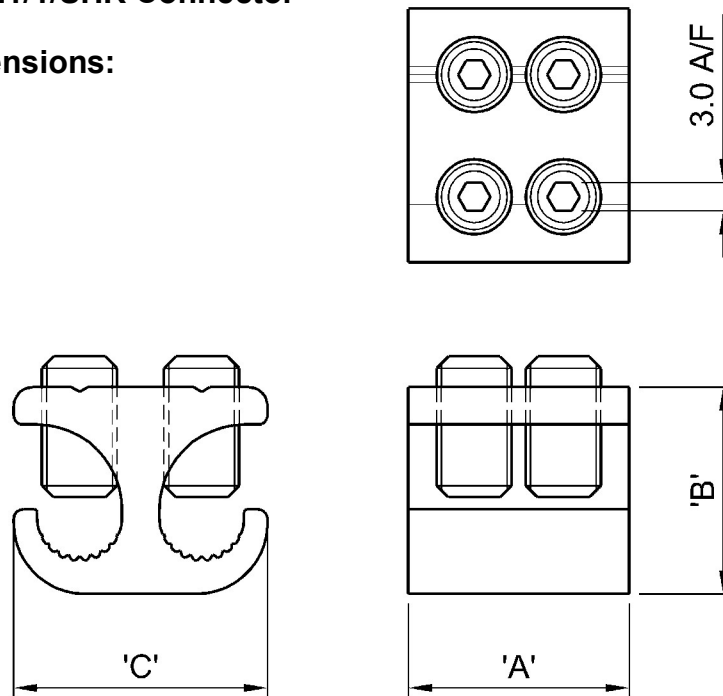
Stranded and solid shaped service conductors.

Product Reference (Part Number)	Type	Core C.S.A. (mm ²)	
		Min	Max
MB21/1 & MB21/1/SH (51809-01) (51809-26)	Branch	4*	35

Note: For jointing other core configurations/sizes please contact Sicame Engineering Dept

MB21/1 & MB21/1/SHR Connector

Physical Dimensions:



Connector Reference (Part Number)	Dimensions (mm)		
	'A'	'B'	'C'
MB21/1 & MB21/1/SH (51809-01) (51809-26)	23.5	22.0	27.0

Material:

Body: Copper Alloy (MB21/1 & MB21/1/SHR)

Shroud: Polypropylene

Test Specification:

IEC1238-1: Test Reports TTR/267 and 275

Fitting Instructions:

1. Cut the cables to length and strip the core insulation equal to the length of the connector +3mm.
2. Thoroughly abrade all conductors to be jointed.
3. Align cores within connector and tighten screws on each side of the connector consecutively, until tight.