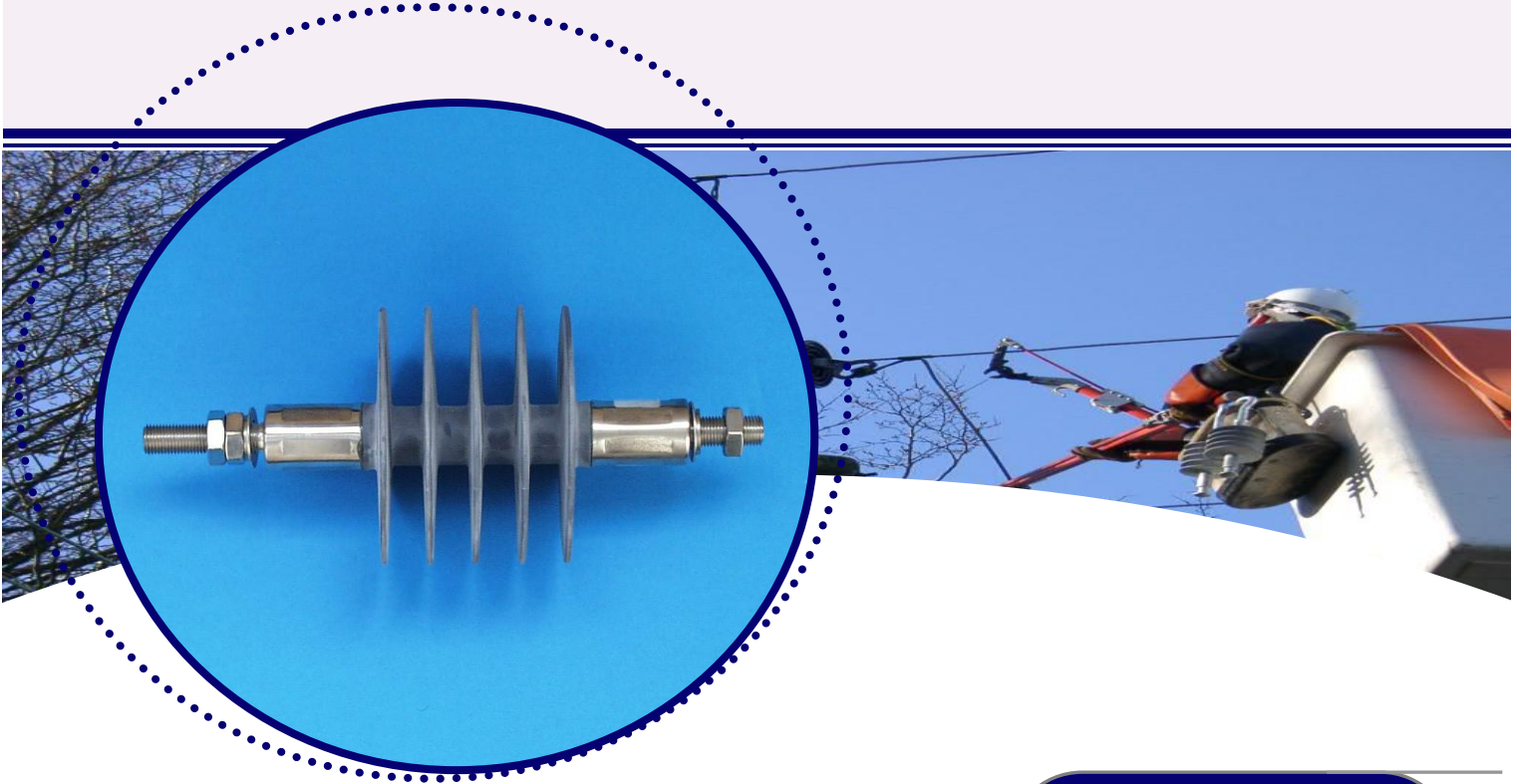


# Standoff Insulators



WT Henley Ltd's range of polymeric standoff insulators have been specified by many worldwide utilities and have been used by virtually all the UK based Regional Electricity Distribution Companies.

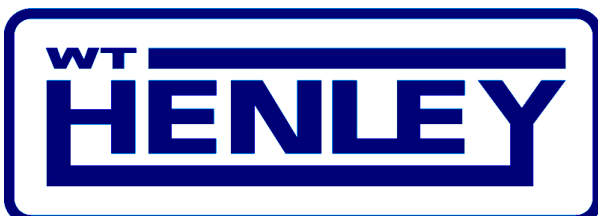
Our unique **EPDM** cladding has more than 25 years of successful field experience, having been exposed to global environmental conditions from the deserts in the Middle East to the iced expanses of Canada.

Also available with **SILICONE** cladding.

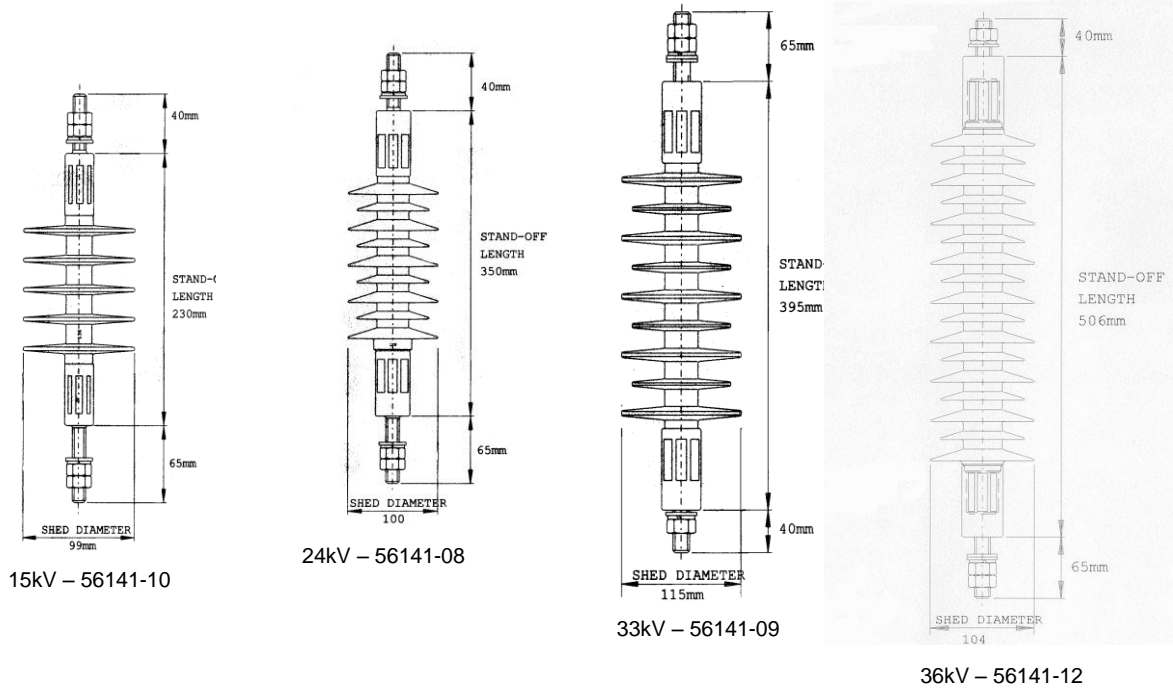
Henley's polymeric standoff insulators have been primarily designed to be used in conjunction with modern MV cable pole terminations. The insulators can be purchased as individual units, in sets or in kit form supplied with the appropriate termination and if required with a support bracket.

Each insulator is supplied with M12 studs at either end together with necessary nuts and washers.

- One piece lightweight construction.
- Unique EPDM cladding with over 25 years of service history.
- Superb impact performance.
- M12 studded end fittings.
- High pollution resistance.
- Excellent VU stability.
- Homogenous cladding material
- Outstanding anti-vandal capabilities.
- High cantilever strength.
- Low profile.
- Cladding / GRP bond tested.



**Standoff insulators (EPDM cladding detailed).**



Product Code.	System Voltage.	Ordering unit.	Weight (kg).	Fixing Height (mm)	M12 Ending Fitting Length (mm)	Shed Diameter (mm)
<b>56141-10</b>	15kV	each	0.85	230	40 / 65	99
<b>56141-08</b>	24kV	each	2.00	350	40 / 65	100
<b>56141-09</b>	33kV	each	2.50	395	40 / 65	115
<b>56141-12</b>	36kV	each	3.25	506	40 / 65	104

Test.	56141-10	56141-08	56141-09	56141-12	Specification
Creepage (mm).	465	615	845	1160	IEC 815.
Taut String (mm).	179	240	375	400	
Impulse Flashover (Dry) kVp.	130	160	236	234	IEC 383:1983. BS 137 : 1982.
Impulse Withstand (Dry) kVp.	125	150	220	222	
AC 1min Flashover (Dry) kV.	95		170	165	
AC 1min Withstand (Dry) kV.	85		160	158	
AC 1min Flashover (Wet) kV.	65	80	120	134	
AC 1min Withstand (Wet) kV.	55	70	108	115	
Cantilever Deflection at 1kN load (mm).	18	15	25	25	
Minimum failing tensile load (kN)	<50	<50	<50	<50	WT Henley Ltd.
Minimum failing torque (Nm)	<45	<65	<65	<65	

**WT Henley Limited**

Silverkey, Church Manorway, ERITH  
 Kent DA8 1EX, England  
 Telephone: +44 (0) 1322 444500  
 Facsimile: +44 (0) 1322 444502  
 Email: sales@wt-henley.com

**Website: www.wt-henley.com**

General Note The equipment detailed in this publication should be installed by a suitably qualified person. WT Henley Limited reserves the right to make changes in product specification without notice or liability. All information is subject to WT Henley's own data and is considered accurate at time of going to print. © 2003 WT Henley Limited. All rights reserved. No part of this document may be copied or reproduced in whole or in part without prior written approval of WT Henley Limited.

